

TREGENNA

GROUP

MOUNT NEBO 2



MOUNT NEBO 2

Introducing an unparalleled living experience in Taunton: Victorian elegance meets contemporary luxury.

Welcome to a place where timeless Victorian charm joins the convenience of modern living - two exceptional semi-detached 4-bedroom homes, nestled in a highly sought-after location in Taunton. It's time to embrace a lifestyle that seamlessly blends classic grandeur with the finest contemporary comforts, all while incorporating sustainable solutions for a better tomorrow.

Located in one of Taunton's most sought-after areas, these homes place you at the heart of it all. Enjoy easy access to vibrant amenities, premier schools, cultural attractions, and a wide array of leisure activities. Immerse yourself in the best that Taunton has to offer while retreating to your own private sanctuary, merely a 10 minute walk away from the town's centre.

THE HOUSES

Exuding architectural magnificence, these homes boast spacious interiors that pay homage to the Victorian era's grand proportions, refined elegance and sophisticated living. Built of traditional block construction, with rendered and stone elevations, these 3 storey, 4 bedroom homes rest under a classic, clay tile roof. Bay windows, modern skylights and high ceilings contribute to creating light and luxurious homes. To ensure the properties are in keeping with the surrounding period homes, Mount Nebo 2 project features detailed corbel coursing, repurposed Bath Stone pillar caps and sills externally, whilst interior details include 200mm torus skirting, picture rails and covings, amphasite grey radiators as well as walls finished in 'Egyptian Cotton' paint. To the front, the properties benefit from off-road parking and to the rear, generous Indian sandstone patios extend into the gardens bordered by a tall period wall, adding further to the unique atmosphere of these homes.

The accommodation comprises in brief: entrance porch leading into the hall and doors to all principal ground floor rooms – living room enhanced with a large bay window; convenient downstairs WC; open plan, modern shaker style kitchen & dining area with a snug, creating the perfect entertaining space with bi-folding doors to the garden, allowing the outside in.

To the first floor there are 3 bedrooms - 2 double and 1 single. The bedroom with the aspect to the front benefits from a large bay window. The floor is also equipped with a family bathroom and a convenient storage cupboard. The second floor is dedicated to the wow factor master bedroom - luxurious en-suite, dedicated dressing table area and clothes cupboard come together seamlessly to create the perfect haven.

Mount Nebo 2 project also carries our commitment to the future - each home is carefully designed to ensure energy efficiency through the use of sustainable construction methods and materials, superior insulation, air source heat pumps, underfloor heating to the ground floor and highest rating appliances. Our approach ensures that the new owners can revel in their elegant surroundings while making a positive impact on the environment.

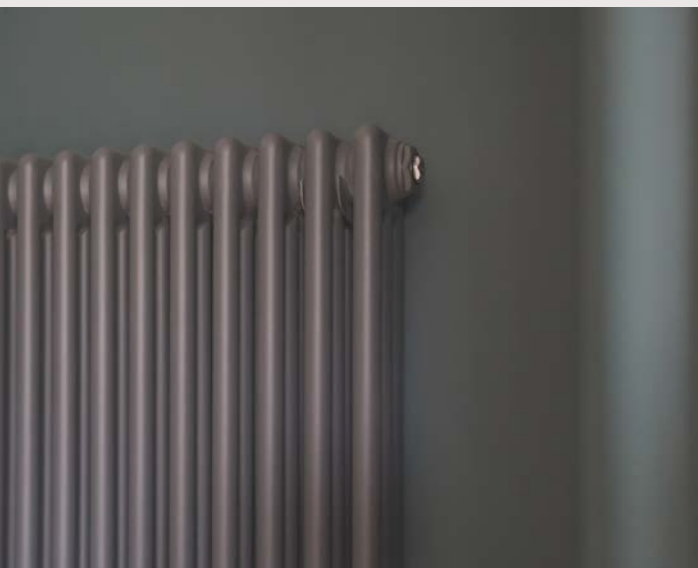


4 bed, 3 storey, semi-detached house



Garden View





SPECIFICATION

Kitchen

- Contemporary shaker style kitchen with soft close runners
- Premium brand single oven, combi-microwave, induction hob
- Integrated fridge freezer and dishwasher
- Stainless steel one and half bowl undercounter sink with a chrome monobloc mixer tap
- LED lighting throughout including under unit lighting
- Silstone worktop

Heating

- Daikin high-performance air-source heat pump for heating and water
- Underfloor heating throughout ground floor with Wi-Fi enabled touch screen

Bathroom & Ensuite

- Contemporary bathroom suites with back-to-wall WC & wall mounted designer basins with elegant chrome bottle-traps
- Wall mounted thermostatic bath filler mixer tap with independent hair wash shower fitting to bath
- Luxury walk-in shower enclosures with glass screen, contemporary shower valves, multifunction shower head on variable riser & large overhead secondary shower head
- Multi-panel bathroom wall panels

Electrical

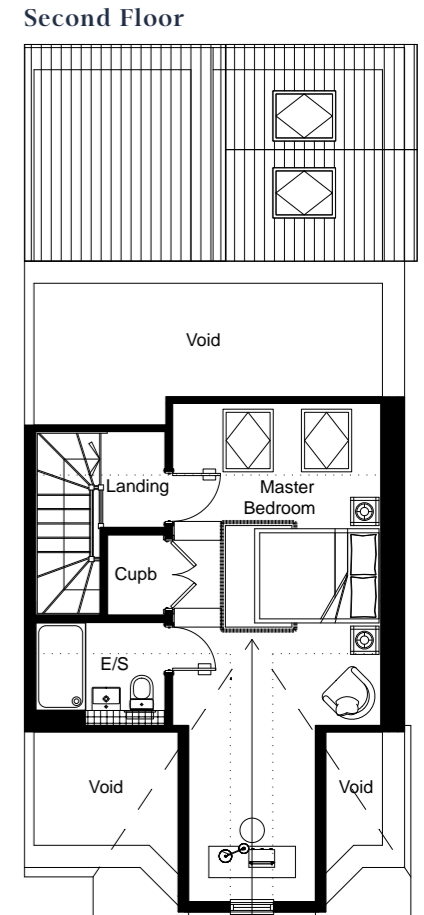
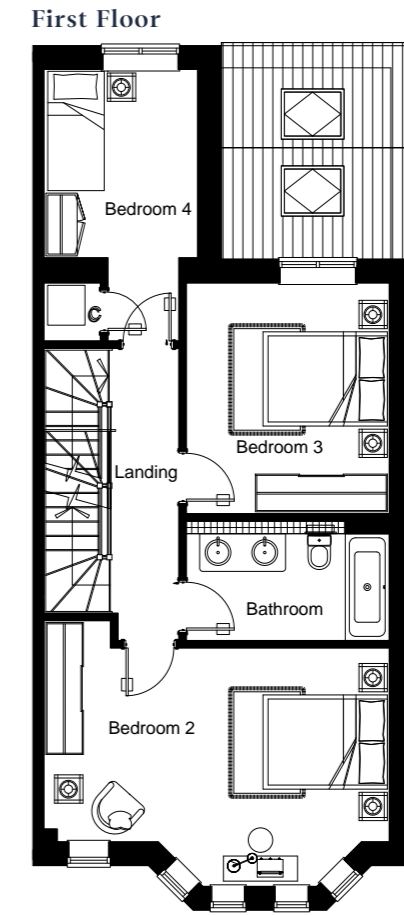
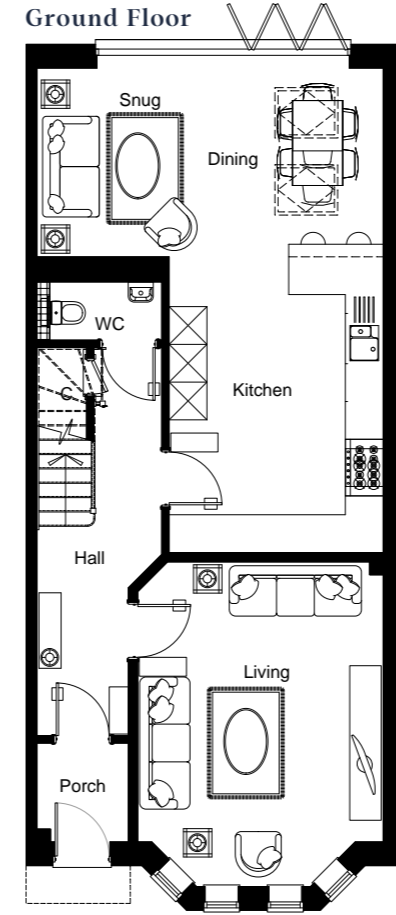
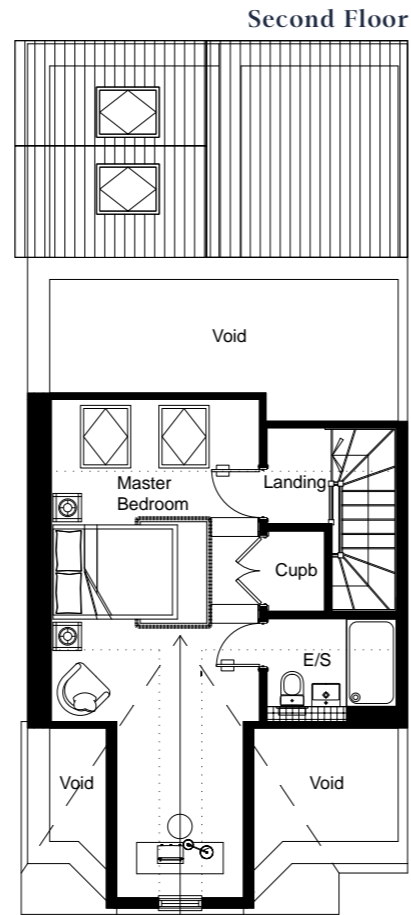
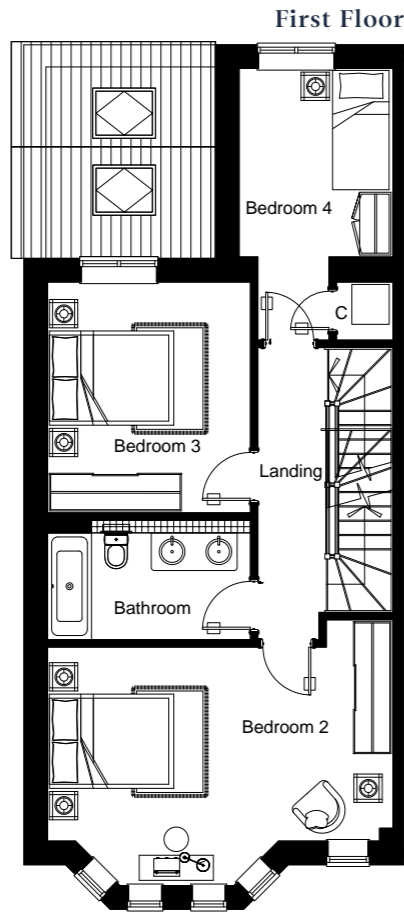
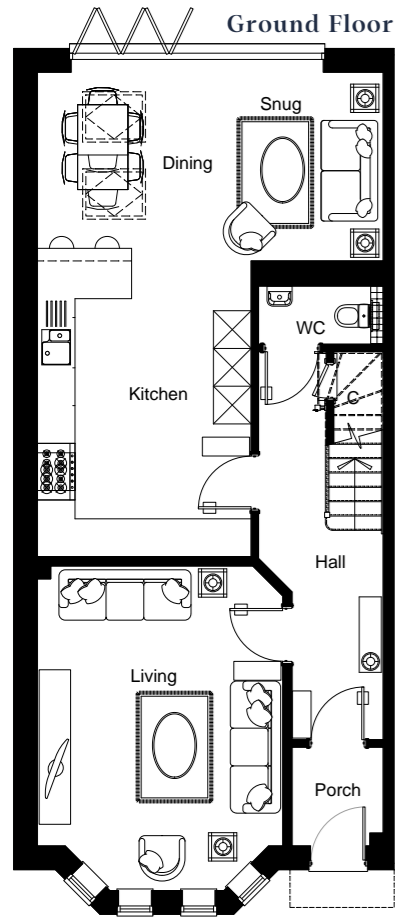
- Ceiling mounted smoke and heat detectors
- Telephone and TV points in relevant rooms

Internal finishes

- Contemporary oak doors with chrome lever handles
- Picture rails and coving in main rooms
- Woodwork finished in satin wood
- Walls finished in 'Egyptian Cotton' paint
- Ceilings finished in Dulux contract white paint
- High-performance insulation to achieve low energy demands
- Oak hand and base rail with white painted spindles
- 200mm torus skirting
- Amphasite grey radiators in relevant rooms

External Finishes

- Front entrance door with high security locking mechanism
- Fitted entrance porch light with PIR detector and rear entrance light
- Outside tap and electric power points
- Low maintenance high quality uPVC double glazed windows and sliding bi-fold doors finished in white
- Limestone paved terrace area



*Dimensions and specifications are preliminary and subject to change.

*Dimensions and specifications are preliminary and subject to change.

PLOT 1 Floor Plan

Dining/Snug	5.5m x 3m	Master Bedroom	3.31m x 7.93m
Kitchen	3.4m x 4m	En-suite	2.06m x 1.63m
Living Room	3.9m x 5.15m	Bedroom 2	5.5m x 3.79m
WC	1.98m x 0.92m	Bedroom 3	3.23m x 3.67m
		Bedroom 4	2.45m x 3m
		Bathroom	3.23m x 1.9m

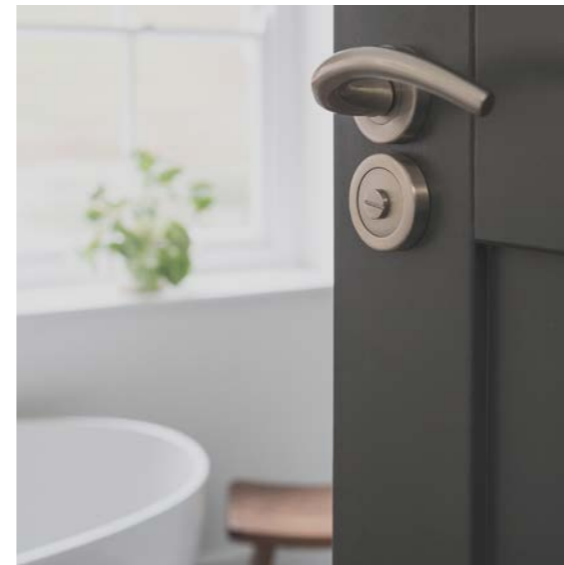
Total: 161 m² (1733 ft²) approx

PLOT 2 Floor Plan

Dining/Snug	5.5m x 3m	Master Bedroom	3.31m x 7.93m
Kitchen	3.4m x 4m	En-suite	2.06m x 1.63m
Living Room	3.9m x 5.15m	Bedroom 2	5.5m x 3.79m
WC	1.98m x 0.92m	Bedroom 3	3.23m x 3.67m
		Bedroom 4	2.45m x 3m
		Bathroom	3.23m x 1.9m

Total: 161 m² (1733 ft²) approx





CONTACT

If you would like to learn more about this development or to arrange a viewing please get in touch admin@tregennagroup.com

TREGENNA

GROUP

admin@tregennagroup.com

01643 829088

tregennagroup.com